

Filter regulator | BGO

Service 3 unit

Service 2 unit

Filter regulator

Filter

Pressure regulator

Lubricator

System extensions

Accessories

Special products



Image shows:
9.1900.00.005.0V

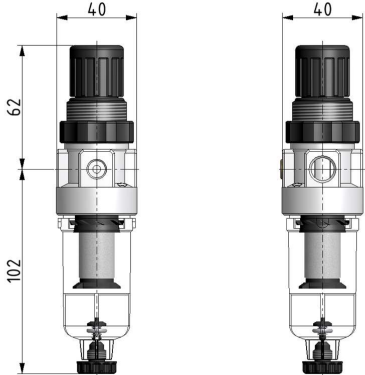
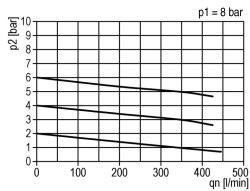
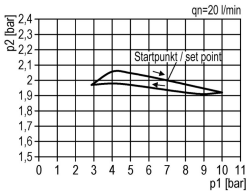


Image shows:
9.1900.00.005.0V

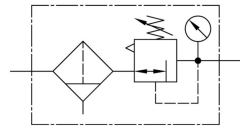
flow characteristic



pressure characteristic



symbol



technical data

- **description:** sinter filter centrifugal principle, diaphragm-type pressure with relieving feature
- **medium:** compressed air, neutral gases
- **supply pressure P1 min.:** 1,5 bar
- **supply pressure P1 max.:** 16 bar
- **temperature range:** 0 - 60°C
- **bowl:** PC
- **drain:** HA
- **mounting:** vertical
- **filter element:** 5 µm

accessories



- **control panel mounting:**
[WH.M 30/DR.00-34](#)

type	part-number	description	price (pre-tax)
FD.00 HA4	9.1900.00.005.0V	Filter regulator G1/8 0,5-10 5µm with PC bowl and semi automatic drain	50.01 €
FD.00 M HA4	9.1900.00.007.0V	Filter regulator G1/8 0,5-10 5µm with metal bowl and semi automatic drain	59.76 €
FD.01 HA4	9.1901.00.005.0V	Filter regulator G1/4 0,5-10 5µm with PC bowl and semi automatic drain	50.01 €
FD.01 M HA4	9.1901.00.007.0V	Filter regulator G1/4 0,5-10 5µm with metal bowl and semi automatic drain	59.76 €

Filter regulator | BG1



Image shows:
9.1911.00.005.0V

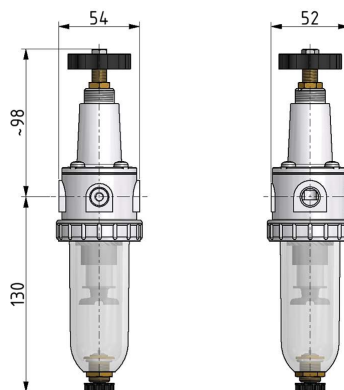
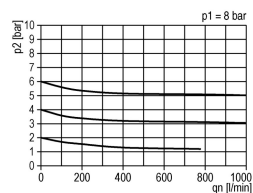
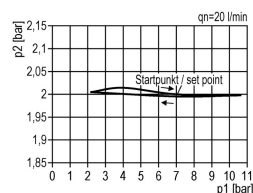


Image shows:
9.1911.00.005.0V

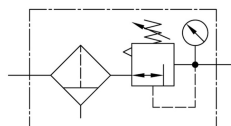
flow characteristic



pressure characteristic



symbol



technical data

- **description:** sinter filter centrifugal principle, diaphragm-type pressure with relieving feature
- **medium:** compressed air, neutral gases
- **supply pressure P1 min.:** 1,5 bar
- **supply pressure P1 max.:** 16 bar
- **temperature range:** 0 - 60°C
- **bowl:** PC
- **drain:** HA3
- **mounting:** vertical
- **filter element:** 5 µm

accessories



- **mounting bracket:** [BW.10](#)

- **control panel mounting:** nut DR.11-7

type	part-number	description	price (pre-tax)
FD.11 HA3	9.1911.00.005.0V	Filter regulator G1/4 0,5-10 5µm with PC bowl and semi automatic drain	57.78 €
FD.11 M HA3	9.1911.00.007.0V	Filter regulator G1/4 0,5-10 5µm with metal bowl and semi automatic drain	61.91 €
FD.11 HA3 B	9.1911.00.008.0V	Filter regulator G1/4 0,5-10 5µm with PC bowl, bowl guard and semi automatic drain	70.18 €
FD.12 HA3	9.1912.00.005.0V	Filter regulator G3/8 0,5-10 5µm with PC bowl and semi automatic drain	57.78 €
FD.12 M HA3	9.1912.00.007.0V	Filter regulator G3/8 0,5-10 5µm with metal bowl and semi automatic drain	61.91 €
FD.12 HA3 B	9.1912.00.008.0V	Filter regulator G3/8 0,5-10 5µm with PC bowl, bowl guard and semi automatic drain	70.18 €

Service 3 unit

Service 2 unit

Filter regulator

Filter

Pressure regulator

Lubricator

System extensions

Accessories

Special products

Filter regulator | BG2

Service 3 unit

Service 2 unit

Filter regulator

Filter

Pressure regulator

Lubricator

System extensions

Accessories

Special products



Image shows:
9.1922.00.125.0V

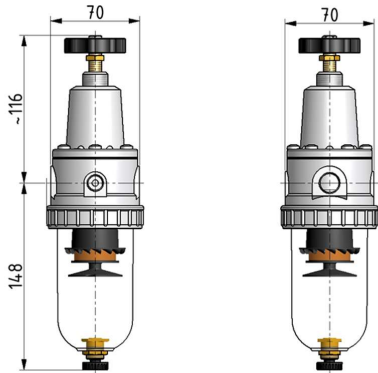
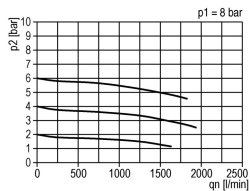
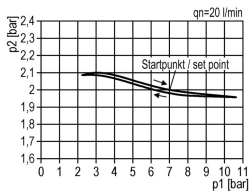


Image shows:
9.1922.00.125.0V

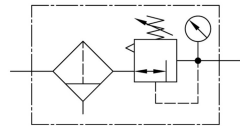
flow characteristic



pressure characteristic



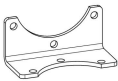
symbol



technical data

- **description:** sinter filter centrifugal principle, diaphragm-type pressure with relieving feature
- **medium:** compressed air, neutral gases
- **supply pressure P1 min.:** 1,5 bar
- **supply pressure P1 max.:** 16 bar
- **temperature range:** 0 - 60°C
- **bowl:** PC
- **drain:** HA3
- **mounting:** vertical
- **filter element:** 40 µm

accessories



- **mounting bracket:** [BWV.30](#)

- **control panel mounting:** nut
DR.11-7

type	part-number	description	price (pre-tax)
FD.22 HA3	9.1922.00.125.0V	Filter regulator G3/8 0,5-10 40µm with PC bowl and semi automatic drain	85.40 €
FD.22 M HA3	9.1922.00.127.0V	Filter regulator G3/8 0,5-10 40µm with metal bowl and semi automatic drain	90.41 €
FD.22 HA3 B	9.1922.00.128.0V	Filter regulator G3/8 0,5-10 40µm with PC bowl, bowl guard and semi automatic drain	101.77 €
FD.22 AM10	9.1922.00.130.0V	Filter regulator G3/8 0,5-10 40µm with PC bowl and automatic drain	126.08 €
FD.22 M AM10	9.1922.00.132.0V	Filter regulator G3/8 0,5-10 40µm with metal bowl and automatic drain	131.10 €
FD.22 AM10 B	9.1922.00.133.0V	Filter regulator G3/8 0,5-10 40µm with PC bowl, bowl guard and automatic drain	142.46 €
FD.23 HA3	9.1923.00.125.0V	Filter regulator G1/2 0,5-10 40µm with PC bowl and semi automatic drain	90.91 €
FD.23 M HA3	9.1923.00.127.0V	Filter regulator G1/2 0,5-10 40µm with metal bowl and semi automatic drain	95.93 €
FD.23 HA3 B	9.1923.00.128.0V	Filter regulator G1/2 0,5-10 40µm with PC bowl, bowl guard and semi automatic drain	107.29 €
FD.23 AM10	9.1923.00.130.0V	Filter regulator G1/2 0,5-10 40µm with PC bowl and automatic drain	131.60 €
FD.23 M AM10	9.1923.00.132.0V	Filter regulator G1/2 0,5-10 40µm with metal bowl and automatic drain	136.62 €
FD.23 AM10 B	9.1923.00.133.0V	Filter regulator G1/2 0,5-10 40µm with PC bowl, bowl guard and automatic drain	147.97 €

Service 3 unit

Service 2 unit

Filter regulator

Filter

Pressure regulator

Lubricator

System extensions

Accessories

Special products

Filter regulator | BG3

Service 3 unit

Service 2 unit

Filter regulator

Filter

Pressure regulator

Lubricator

System extensions

Accessories

Special products



Image shows:
9.1933.00.005.0V

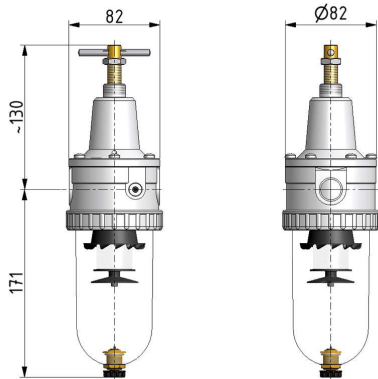
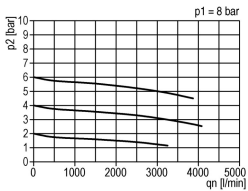
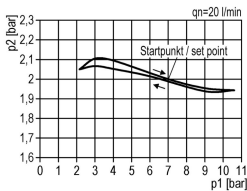


Image shows:
9.1933.00.005.0V

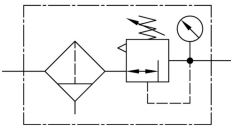
flow characteristic



pressure characteristic



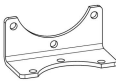
symbol



technical data

- **description:** sinter filter centrifugal principle, diaphragm-type pressure with relieving feature
- **medium:** compressed air, neutral gases
- **supply pressure P1 min.:** 1,5 bar
- **supply pressure P1 max.:** 16 bar
- **temperature range:** 0 - 60°C
- **bowl:** PC
- **drain:** HA3
- **mounting:** vertical
- **filter element:** 5 µm

accessories



- **mounting bracket:** [BWV.30](#)

- **control panel mounting:** nut DR.11-7

type	part-number	description	price (pre-tax)
FD.33 HA3	9.1933.00.005.0V	Filter regulator G1/2 0,5-10 5µm with PC bowl and semi automatic drain	105.15 €
FD.33 M HA3	9.1933.00.007.0V	Filter regulator G1/2 0,5-10 5µm with metal bowl and semi automatic drain	110.83 €
FD.33 HA3 B	9.1933.00.008.0V	Filter regulator G1/2 0,5-10 5µm with PC bowl, bowl guard and semi automatic drain	123.89 €
FD.33 AM10	9.1933.00.010.0V	Filter regulator G1/2 0,5-10 5µm with PC bowl and automatic drain	145.83 €
FD.33 M AM10	9.1933.00.012.0V	Filter regulator G1/2 0,5-10 5µm with metal bowl and automatic drain	151.52 €
FD.33 AM10 B	9.1933.00.013.0V	Filter regulator G1/2 0,5-10 5µm with PC bowl, bowl guard and automatic drain	164.58 €

Filter regulator | BG5



Image shows:
9.1954.00.125.0

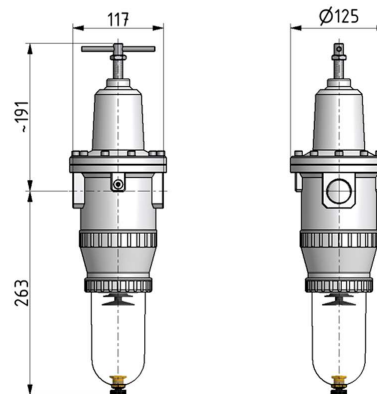


Image shows:
9.1954.00.125.0

Service 3 unit

Service 2 unit

Filter regulator

Filter

Pressure regulator

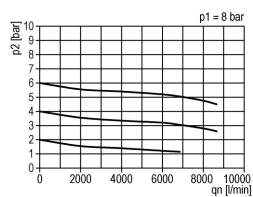
Lubricator

System extensions

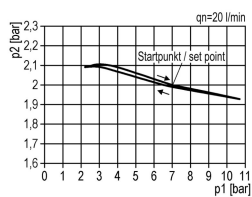
Accessories

Special products

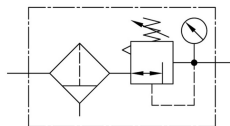
flow characteristic



pressure characteristic



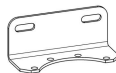
symbol



technical data

- **description:** sinter filter centrifugal principle, diaphragm-type pressure with relieving feature
- **medium:** compressed air, neutral gases
- **supply pressure P1 min.:** 1,5 bar
- **supply pressure P1 max.:** 16 bar
- **temperature range:** 0 - 60°C
- **bowl:** PC
- **drain:** HA3
- **mounting:** vertical
- **filter element:** 40 µm

accessories



- mounting bracket: [BW.50](#)

Service 3 unit				
	type	part-number	description	price (pre-tax)
	FD.54 HA3	9.1954.00.125.0	Filter regulator G3/4 0,5-10 40µm with PC bowl and semi automatic drain	259.52 €
	FD.54 M HA3	9.1954.00.127.0	Filter regulator G3/4 0,5-10 40µm with metal bowl and semi automatic drain	265.20 €
	FD.54 HA3 B	9.1954.00.128.0	Filter regulator G3/4 0,5-10 40µm with PC bowl, bowl guard and semi automatic drain	278.26 €
	FD.54 AM10	9.1954.00.130.0	Filter regulator G3/4 0,5-10 40µm with PC bowl and automatic drain	300.21 €
	FD.54 M AM10	9.1954.00.132.0	Filter regulator G3/4 0,5-10 40µm with metal bowl and automatic drain	305.89 €
	FD.54 AM10 B	9.1954.00.133.0	Filter regulator G3/4 0,5-10 40µm with PC bowl, bowl guard and automatic drain	318.95 €
	FD.55 HA3	9.1955.00.125.0	Filter regulator G1 0,5-10 40µm with PC bowl and semi automatic drain	239.33 €
	FD.55 M HA3	9.1955.00.127.0	Filter regulator G1 0,5-10 40µm with metal bowl and semi automatic drain	245.02 €
	FD.55 HA3 B	9.1955.00.128.0	Filter regulator G1 0,5-10 40µm with PC bowl, bowl guard and semi automatic drain	258.08 €
	FD.55 AM10	9.1955.00.130.0	Filter regulator G1 0,5-10 40µm with PC bowl and automatic drain	280.02 €
	FD.55 M AM10	9.1955.00.132.0	Filter regulator G1 0,5-10 40µm with metal bowl and automatic drain	285.70 €
	FD.55 AM10 B	9.1955.00.133.0	Filter regulator G1 0,5-10 40µm with PC bowl, bowl guard and automatic drain	298.76 €
	FD.55 HA3	9.1955.00.665.0V	Filter regulator G1 0,5-16 40µm with PC bowl and semi automatic drain	239.33 €
Filter regulator				
Filter				
Pressure regulator				
Lubricator				
System extensions				
Accessories				
Special products				