

SR Series regulator



Symbol



Product feature

1. Panel support can be chosen for the installation of regulator with independent use in pipeline.
2. The structure is delicate and compact, which is convenient for installation and application.
3. The performance of pressure adjustment is reliable and steady.
4. In addition to standard type, lower pressure type is optional (The highest adjustable pressure is 0.4 MPa).

Specification

Model	SR200-06	SR200L-06	SR200-08	SR200L-08
Fluid	Air			
Port size [Note1]	1/8"		1/4"	
Pressure range	Standard type:0.05~0.9MPa(7~130psi); Lower pressure type:0.03~0.4MPa(4~57psi)			
Max. pressure	1.0MPa(145psi)			
Proof pressure	1.5MPa(215psi)			
Temperature range	-20~70°C			

[Note1] PT thread, G thread and NPT thread are available.

Ordering code

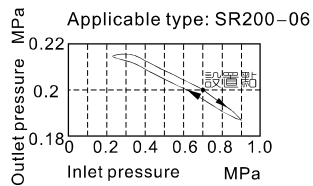
SR 200 08 L □ □ 1 □

① ② ③ ④ ⑤ ⑥ ⑦ ⑧

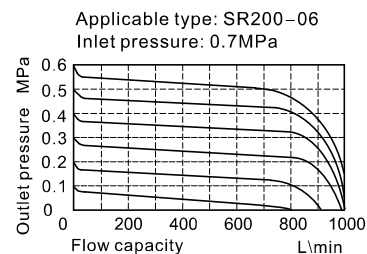
① Model	② Series code	③ Port size	④ Type code	⑤ Accessories	⑥ Pressure gauge	⑦ Scale	⑧ Thread type
SR: Regulator (Mini type)	200: 200 Series	06: 1/8" 08: 1/4"	Blank: Standard L: Lower pressure	Blank: Bracket J: No bracket	Blank: Pressure gauge N: No pressure gauge	1: MPa 2: psi 3: bar 4: kgf/cm ² & psi	Blank:PT (Scale:Mpa or kgf/cm ² & psi) G:G(Scale:bar) T:NPT(Scale:psi)

Pressure and feature of flow

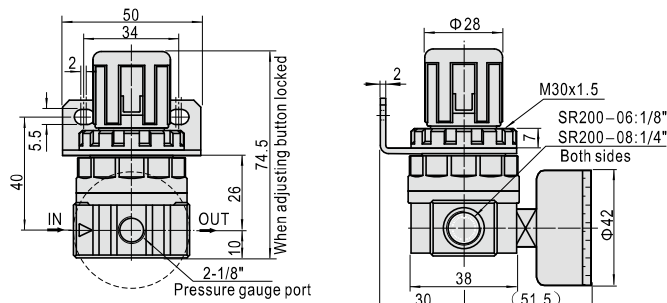
Pressure chart



Flow chart



Dimensions



SDR Series regulator



Symbol



Product feature

1. Back pressure structure, compact type, cost-effective, installation time saving.
2. Broad regulating range; low-pressure type is optional other than the standard type; stable output pressure; applicable to situation which has low expectation on output pressure but high expectation on performance and cost-effectiveness.
3. Single unit installation; easy to mount

Specification

Model	SDR100-M5	SDR100-06	SDR200-06	SDR200-08	SDR100L-M5	SDR100L-06	SDR200L-06	SDR200L-08
Fluid	Air							
Pressure range	0.05~0.9MPa(7~130psi)				0.03~0.4MPa(4~57psi)			
Max. pressure	1.0MPa(145psi)							
Proof pressure	1.5MPa(215psi)							
Temperature range	-20~70°C							
Port size [Note1]	M5	1/8"	1/4"	M5	1/8"	1/4"		1/4"

[Note1] PT thread, G thread and NPT thread are available.

Ordering code

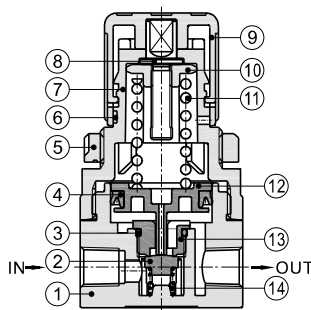
SDR 200 08 L □ □ 1 □

① ② ③ ④ ⑤ ⑥ ⑦ ⑧

① Model	② Series code	③ Port size	④ Type code	⑤ Accessories	⑥ Pressure gauge	⑦ Scale	⑧ Thread type
SDR: SDR series regulator	100: 100 series	M5: M5 06: 1/8"	Blank: Standard L: Lower pressure	Blank: Bracket J: No bracket	Blank: Pressure gauge N: No pressure gauge	1: MPa 2: psi 3: bar	Blank:PT G:G T:NP
	200: 200 series	06: 1/8" 08: 1/4"					

Inner structure and material of major parts

SDR Series

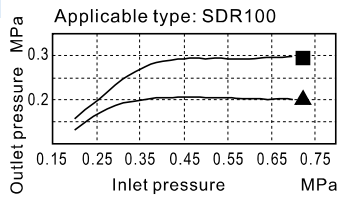


No.	Item	Material
1	Body	Aluminum alloy
2	Needle gasket	NBR
3	O-ring	NBR
4	O-ring	NBR
5	Fixed ring	POM
6	Identification ring	POM
7	Adjusting seat	POM
8	Adjusting pillar	Brass
9	Adjusting button	POM
10	Adjusting nut	Steel
11	Adjusting spring	SWC
12	Piston rode	POM
13	Adjusting seat	POM
14	Return spring	SUS304

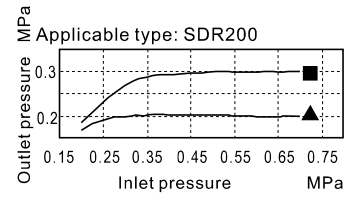
SDR Series regulator

Pressure and feature of flow

Pressure chart

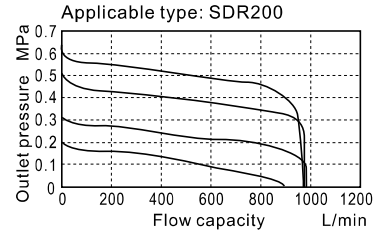
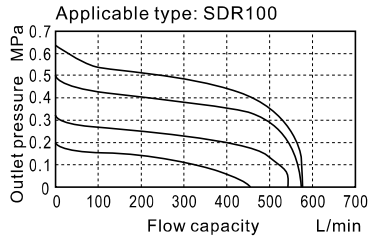


▲ Inlet pressure 0.2MPa ■ Inlet pressure 0.3MPa

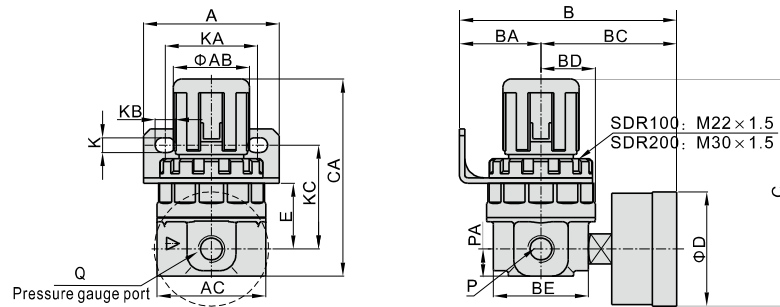


▲ Inlet pressure 0.2MPa ■ Inlet pressure 0.3MPa

Flow chart



Dimensions



Model/Item	A	AB	AC	B	BA	BC	BD	BE	C	CA	D	E	K	KA	KB	KC	P	PA	Q
SDR100□M5	35	20	32	65.5	26	39.5	14.5	29	62.5	54.5	33	17	5.5	22	7	29	M5	7.5	1/16"
SDR100□06	35	20	32	65.5	26	39.5	14.5	29	62.5	54.5	33	17	5.5	22	7	29	1/8"	7.5	1/16"
SDR200□06	50	28	40	80	30	50	20	35	83.5	72.5	42	24	5.5	34	7.5	38	1/8"	10	1/8"
SDR200□08	50	28	40	80	30	50	20	35	83.5	72.5	42	24	5.5	34	7.5	38	1/4"	10	1/8"

Note: Bracket and pressure gauge are optional.

Attentions of application

Unlock the regulating knob before pressure adjustment, then lock it after the adjustment. Otherwise, may cause the regulating knob damage or the outlet pressure change.

1. Pull the regulating knob to unlock, when the orange marking ring below the regulating knob appears, indicating that the regulating knob is unlocked.
2. Push the regulating knob to lock, when the orange marking ring below the regulating knob disappears completely, indicating that the regulating knob is locked.



ADW Series dripleg drain



Symbol



Product feature

1. The float is with lever structure. Low position enables more stable drain.
2. The bowl made of High intensity PC and covered by steel case is safer to use.
3. Double strainer guarantees the operation of the drainer.
4. Inlet with large port size prevents accumulation of particles or rust.
5. The drainage bowl with large capacity can keep more rust and dirt than general drains.
6. The drain is equipped with large float and sensitive to control.
7. The bowl with large size can store a certain amount of water which reduces discharging time and extends the service life.

Ordering code

ADW 400 10 □

① ② ③ ④

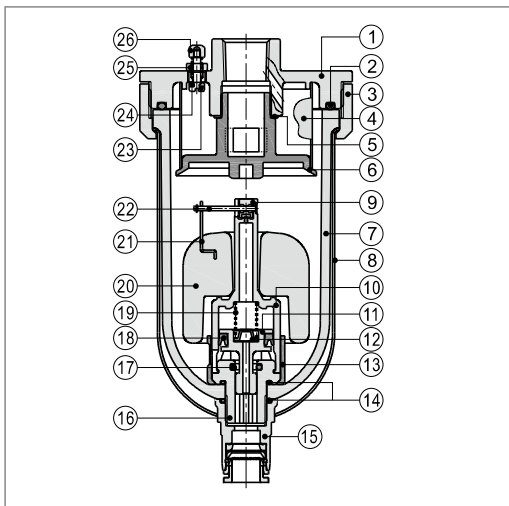
① Model	② Series code	③ Port size	④ Thread type
ADW: Dripleg drain	400: 400 Series	10: 3/8" 15: 1/2"	Blank: PT G: G T: NPT

Specification

Model	ADW400-10	ADW400-15
Fluid	Air	
Pressure range	0.15~1.0MPa(22~145psi)	
Max. pressure	1.0MPa(145psi)	
Proof pressure	1.5MPa(215psi)	
Temperature range	-5~70°C(Unfreezing)	
Port size [Note1]	IN=3/8"	IN=1/2"

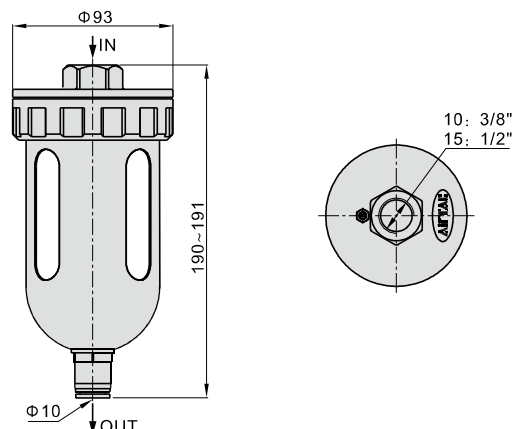
[Note1] PT thread, G thread and NPT thread are available.

Inner structure and material of major parts



No.	Item	Material	No.	Item	Material
1	Body	Aluminum alloy	14	O-ring	NBR
2	O-ring	NBR	15	Drain joint set	
3	Body nut	Aluminum alloy	16	Drain baffle	POM
4	Filter gauze	Stainless steel	17	O-ring	VITON
5	Fixed ring	NBR	18	O-ring	NBR
6	Filter	POM	19	Spring	Spring steel
7	Drain bowl	PC	20	Float	PU rigid foam
8	Bowl guard	08F	21	Link iron	Stainless steel
9	Valve	Stainless steel & rubber	22	Lever	Stainless steel
10	Piston	Aluminum alloy	23	Adjustable screw	Stainless steel
11	Float	PC+ABS	24	Gasket	EPDM
12	Silencer	Agglomerated by brass grain	25	Balance needle seat	Stainless steel
13	Filter element	Stainless steel & rubber	26	Screw	Steel

Dimensions

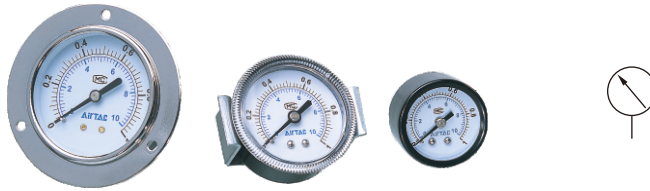


Installation and application

1. ADW400 series are applicable to following air compressing equipments: air storage tank, dryer, filter, and piping.
2. Minimum 300mm room is required if the bottom end of above-mentioned equipments being connected with a (1/2") joint.
3. Using a 1/2" hand lever valve between the air compressing equipment and the inlet of ADW400 is good for maintenance.
4. The air displacement of the air compressing equipment can't be lower than 182 L/min.
5. Make sure the drain is vertical downward and the drain pipe is not bended upside.
6. Do not use acidoid or volatile oil gas (hydrochloric acid, petrol, methylbenzene, etc.) to clean the PC bowl. This may cause break.
7. Push the hexagon nut of the body to release the residual pressure before dissembling the PC bowl and metal protection case to avoid any injury or harm.

Preparation unit—Accessories

GS/GF/GU Series pressure gauge



Ordering code

F-G S 40 10 P

① ② ③ ④ ⑤ ⑥

① Accessories code	② Model	③ Mount Type Code
F: Accessories	G: Pressure gauge	S: Standard Mount F: Flange Mount U: Panel Mount
④ Dial diameter	⑤ Max. pressure scale	⑥ Scale and thread type
30: OD 30mm 40: OD 40mm 50: OD 50mm 60: OD 60mm	04: 60psi 10: 150psi	P: psi(NPT)

Specification

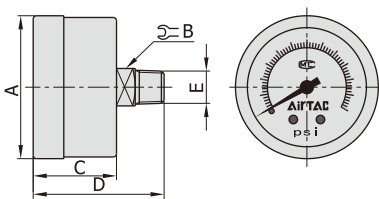
Model	GS40, GF40, GU40	GS50, GF50, GU50	GF60, GU60
Fluid	Air		
Port size	1/8"	1/4"	1/4"
Temperature range	-20~70°C		
Accuracy grade	2.5		
The pressure range of units and instructions	0~140psi(Standard type); 0~60psi(Lower pressure type)		
Material of major parts	Shell: SPCC ; Core: Brass		

Product feature

1. It has sensitive reaction and can work under low pressure.
2. The displayed words in the dial are clear.
3. There are several installation ways and installing accessories to be selected.
4. Various dimensions of screw thread are available.

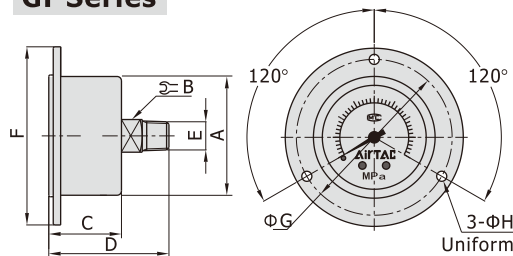
Dimensions

GS Series



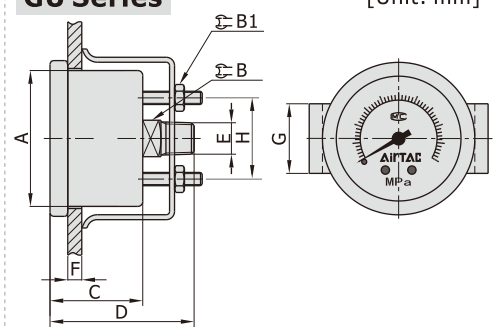
Model	A	B	C	D	E
GS-40	42	11	24.5	38.5	1/8"
GS-50	52	14	26.5	44.5	1/4"

GF Series



Model	A	B	C	D	E	F	G	H
GF-40	42	11	24.5	40.5	1/8"	60	52.5	3.4
GF-50	52	14	27.5	47.5	1/4"	71	62	4.4
GF-60	62	14	30	50	1/4"	82	71.5	4.4

GU Series



Model	A	B	B1	C	D	E	F(max)	G	H
GU-40	42	11	7	28	43.5	1/8"	5	21	24.5
GU-50	52	14	8	30.5	50	1/4"	7	24	35
GU-60	62	14	8	30.5	50	1/4"	7	25	35

[Unit: mm]