

# Preparation unit—Regulator



## SR Series

### Specification

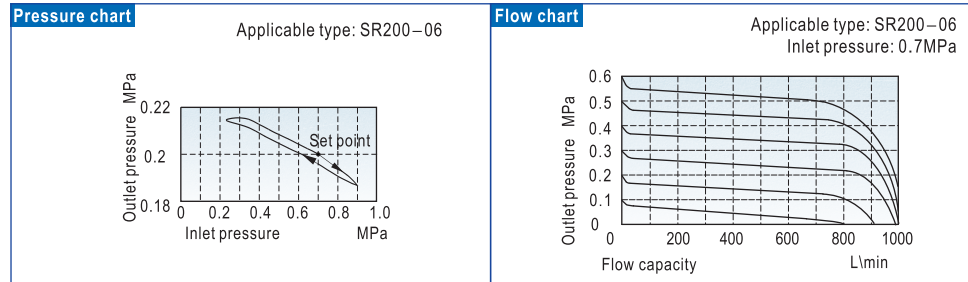
Model	SR200-06	SR200L-06	SR200-08	SR200L-08
Fluid	Air			
Port size	1/8"		1/4"	
Pressure range	Standard type:0.05~0.9MPa(7~130psi) ; Lower pressure type:0.03~0.4MPa(4~57psi)			
Max. pressure	1.0MPa(145psi)			
Proof pressure	1.5MPa(215psi)			
Temperature range	-20~70°C			

### Ordering code

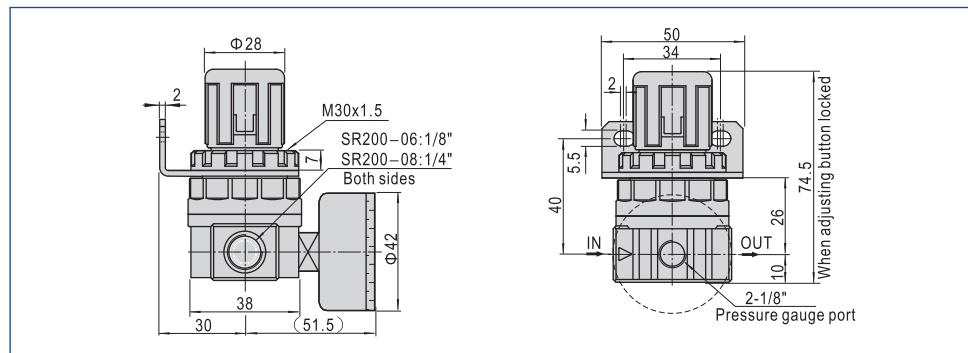
**SR 200 L 08 □ P**

- Model**  
SR: Regulator(Mini type)
- Series code**  
200: 200 Series
- Type code**  
Blank: Standard  
L: Lower pressure
- Thread type**  
P: PT  
T: NPT  
G: G
- Scale**  
Blank: MPa  
P: psi  
B: bar  
Z: Double scale(psi、kgf/cm<sup>2</sup>)
- Port size**  
06: 1/8"  
08: 1/4"

### Pressure and feature of flow



### Dimensions



### Symbol



### Product feature

1. Panel support can be chosen for the installation of regulator with independent use in pipeline.
2. The structure is delicate and compact, which is convenient for installation and application.
3. The performance of pressure adjustment is reliable and steady.
4. In addition to standard type, lower pressure type is optional (The highest adjustable pressure is 0.4 MPa).



# Preparation unit—Accessories



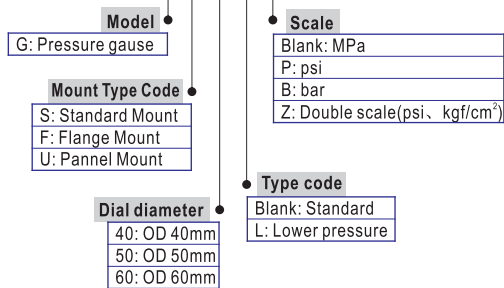
## Pressure gauge

### Specification

Model	GS-40 GF-40 GU-40	GS-50 GF-50 GU-50	GF-60 GU-60	GS-40L GF-40L GU-40L	GS-50L GF-50L GU-50L	GF-60L GU-60L
Fluid	Air					
Port size	1/8"	1/4"	1/4"	1/8"	1/4"	1/4"
Temperature range	-20~60°C					
Accuracy grade	2.5					
Type	Standard type			Lower pressure type		
The pressure range of units and instructions	M	0~1.0MPa			0~0.4MPa	
	B	0~10 bar			0~4 bar	
	P	0~140psi			0~60psi	
	Z	0~10kgf/cm <sup>2</sup> and 0~140psi(Dual-scale display)			0~4kgf/cm <sup>2</sup> and 0~60psi(Dual-scale display)	
Material of major parts	Shell: SPCC ; Core: Brass					

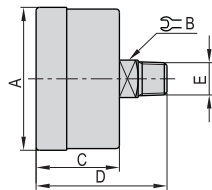
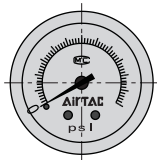
### Ordering code

#### GS 40 L □



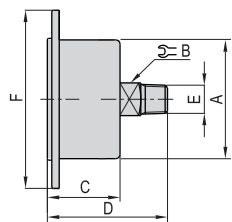
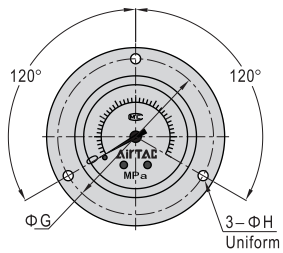
### Dimensions

#### GS Series



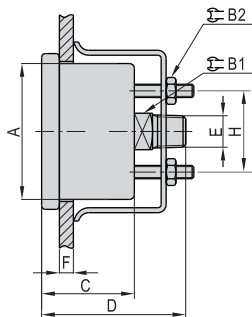
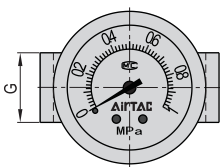
Model	A	B	C	D	E
GS-40	42	11	24.5	38.5	1/8"
GS-50	52	14	26.5	44.5	1/4"

#### GF Series



Model	A	B	C	D	E	F	G	H
GF-40	42	11	24.5	40.5	1/8"	60	52.5	3.4
GF-50	52	14	27.5	47.5	1/4"	71	62	4.4
GF-60	62	14	30	50	1/4"	82	71.5	4.4

#### GU Series



Model	A	B	B1	C	D	E	F(max)	G	H
GU-40	42	11	7	28	43.5	1/8"	5	21	24.5
GU-50	52	14	8	30.5	50	1/4"	7	24	35
GU-60	62	14	8	30.5	50	1/4"	7	25	35



Gauge

### Symbol



### Product feature

1. It has sensitive reaction and can work under low pressure.
2. The displayed words in the dial are clear and there are several pressure units to be selected.
3. There are several installation ways and installing accessories to be selected.
4. Various dimensions of screw thread are available.

# Preparation unit—Pressure controller

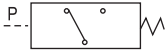


## PK, AIS Series



PK Series

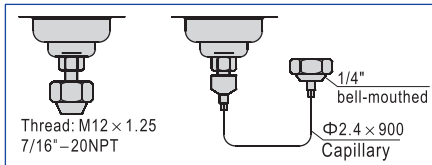
### Symbol



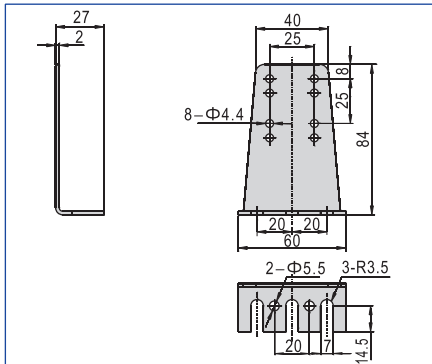
### Product feature

1. Adapt to refrigeration preparation, air, fluid, etc. un-causticity medium(Allowable fluid temperature:  $-10^{\circ}\text{C} \sim 100^{\circ}\text{C}$ ).
2. ISO standard mounting bracket can be used for all position.
3. SPDT switch can insure touch point switch reliably.
4. Protection class: IP40.

### Connection type



### Mounting bracket



### Specification

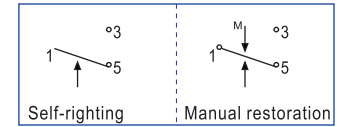
Model	Operating pressure(MPa)		Pressure differetia (MPa)		Aboriginality status (MPa)		Proof pressure (MPa)
	min.	max.	min.	max.	OFF	ON	
PK503	-0.05	0.3	0.035	0.15	0.2	0.1	1.65
PK506	-0.05	0.6	0.06	0.4	0.3	0.2	1.65
PK510	0.1	1.0	0.1	0.3	0.6	0.5	1.65

Note) The pressure unit have "MPa" 、 "Kgf/cm<sup>2</sup>" .

### Electrical specification

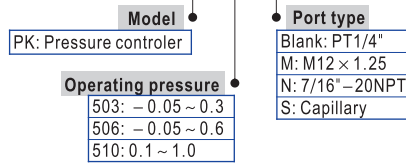
Derivational current	Rated current(A)\Rated voltage(V)		
	125V(AC)	250V(AC)	24V(DC)
Underivational current	20A	10A	8A
Load current	15A	8A	5A
Instantaneous current	72A		

### Wiring diagram of switch

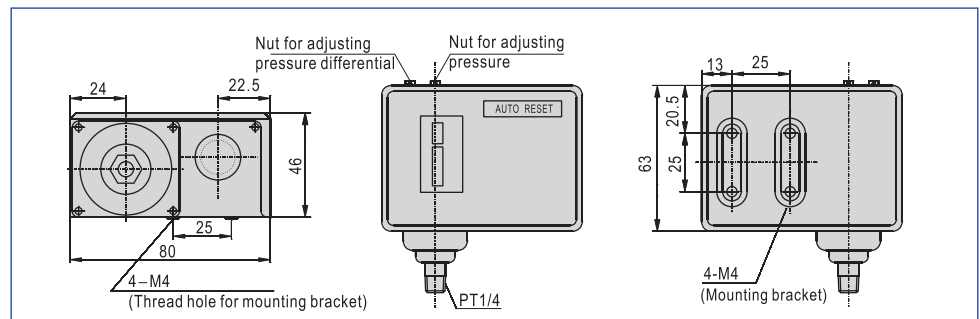


### Ordering code

#### PK 506 M

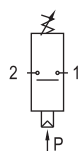


### Dimensions



AIS Series

### Symbol



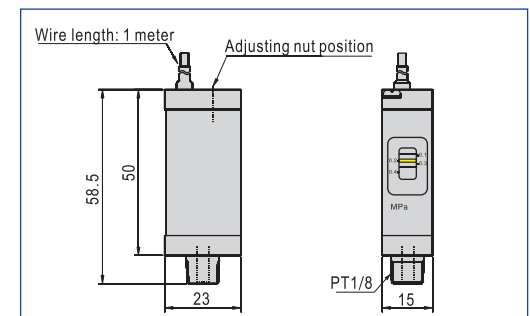
### Specification

Model	Fluid	Operating pressure (MPa)	Max.Operating pressure (MPa)	Pressure differetia (MPa)	Proof pressure (MPa)	Ambient and fluid temperature °C
AIS1000M	Air to be filtered	0.1~0.4	0.7	<0.08	1.0	5~60

### Electrical specification

Switch type	N.O(Normaly opened)
Voltage	24~220V(DC/AC)
Max. current	1000mA
Max. switch power	10W(VA)
Switch times	<1.0ms

### Dimensions



### Ordering code

#### AIS 1000M

