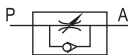


Flow control valve

ASC Series



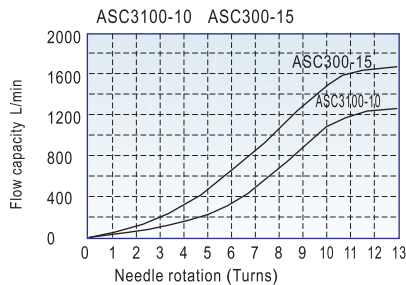
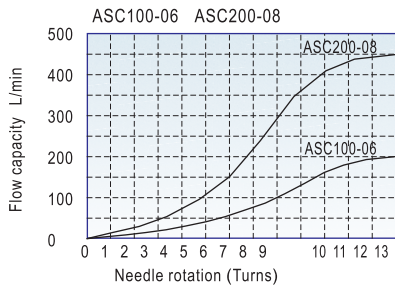
Symbol



Product feature

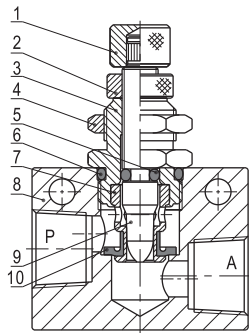
- 1. Small and compact structure.
- 2. Allows air to exhaust and cut off air flow. The adjustment screw is both sensitive and precise..
- 3. Can be mounted in various position to facilitate installation and application.

Flow chart



Inner structure

No.	Item
1	Adjustment cap
2	Clamping cap
3	Throttle body
4	Hexagon nut
5	O-ring
6	O-ring
7	Throttle sheath
8	Body
9	Throttle column
10	Spool O-ring



Specification

Model	ASC100-06	ASC200-08	ASC300-10	ASC300-15
Fluid	Air (to be filtered by 40 μm filter element)			
Port size①	1/8"	1/4"	3/8"	1/2"
Pressure range	0.05~0.95MPa(7~135psi)			
Proof pressure	1.5MPa(215psi)			
Temperature	-20~70℃			
Material body	Aluminum alloy			
Flow (L/min)	Control flow	200	450	1250
	Free flow	400	800	1500

① PT thread, NPT thread and G thread are available.

Ordering code

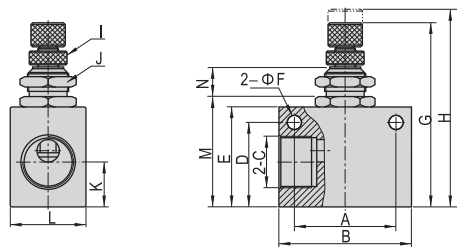
ASC 300 10 P

Model	Thread type
ASC: Flow control valve	P: PT
	T: NPT
	G: G

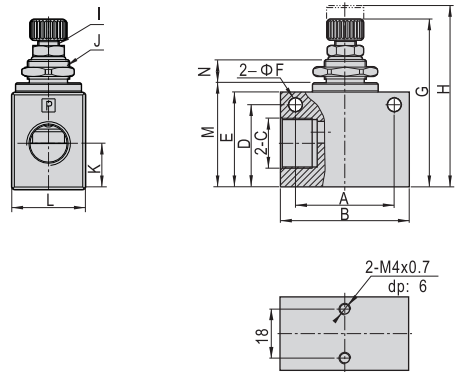
Code	Port size
100: 100 series	Model Port size
200: 200 series	100 series 06: 1/8"
300: 300 series	08: 1/4"
	200 series 10: 3/8"
	300 series 15: 1/2"

Dimensions

ASC100, 200



ASC300



Type\Item	A	B	C	D	E	F	G	H	I	J	K	L	M	N
ASC10006	22	32	1/8"	18	23	4.3	46.8	52.3	M6×0.5	M12×0.75	10	18	26	8.6
ASC20008	26	36	1/4"	23	27	4.3	50.8	56.3	M6×0.5	M12×0.75	13.5	18	30	8.6
ASC30010	35	50	3/8"	32	37	5.3	65	74	M8×0.75	M16×1.0	17.5	28	40.5	10.2
ASC30015	35	50	1/2"	32	37	5.3	65	74	M8×0.75	M16×1.0	17.5	28	40.5	10.2