

Air valve(5/2 way \ 5/3 way)



7A Series

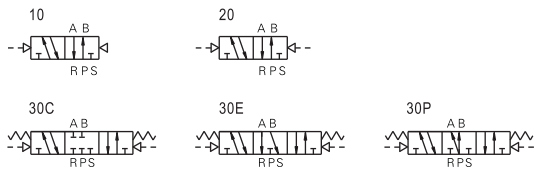


7A

Specification

Model	7A110-06	7A120-06	7A130-06	7A210-08	7A220-08	7A230-08
Port size ①	In=Out=Exhaust=1/8"			In=Out=1/4" Exhaust=1/8"		
Model	7MA110	7MA120	7MA130	7MA210	7MA220	7MA230
Orifice size	9.5mm ²		8.0mm ²	14.0mm ²		11.0mm ²
Cv value	0.55		0.48	0.83		0.65
Valve type	5 port 2 position		5 port 3 position	5 port 2 position		5 port 3 position
Weight	65g	75g	85g	105g	120g	130g
Fluid	Air(to be filtered by 40 μ m filter element)					
Acting	Exterior control					
Operating pressure	0.15~0.8MPa(21~114psi)					
Proof pressure	1.5MPa(215psi)					
Temperature °C	-20~70					
Material of body	Aluminum alloy					
Lubrication ②	Not required					
Max. frequency ③	5 cycle/sec		3 cycle/sec	5 cycle/sec		3 cycle/sec

Symbol

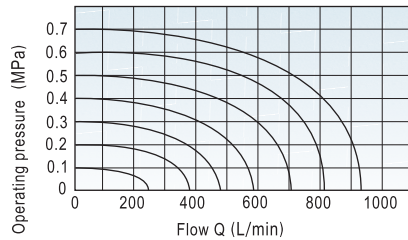


Product feature

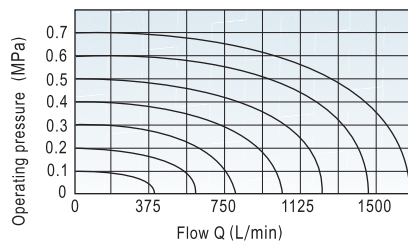
1. Collective exhaust type. exhausting air through R and S.
2. Aluminium alloy die-casting body, Improved internal structure for larger flow rate.
3. Tubing options allow direct tubing(7A) on the valves or manifold mount (7MA)for space saving.
4. Option '7MA' is used with valve sub base.

Flow chart

Model: 7A110-06, 7MA110

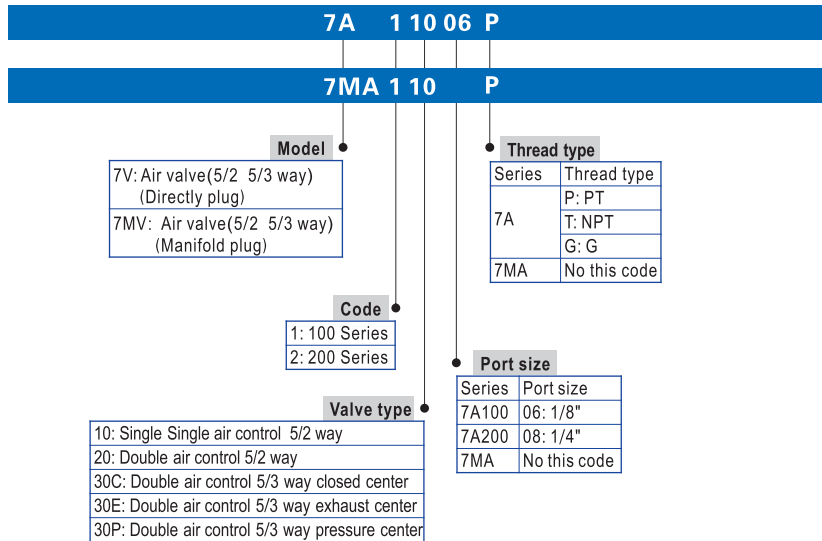


Model: 7A210-08, 7MA210



- ① PT thread, NPT thread and G thread are available. (Except 7MA series).
- ② Once lubricated air is used, continue with same medium to optimise valve life span. Lubricants like ISO VG32 or equivalent are recommended.
- ③ The maximum actuation frequency is in the no-load state.

Ordering code



Please refer to P80 for manifold specification and the order way.



Air valve(5/2 way \ 5/3 way)



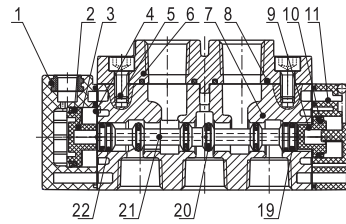
7A Series



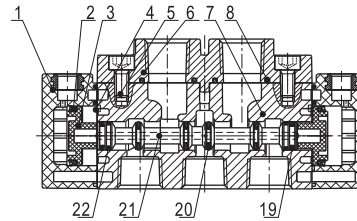
7A

Inner structure

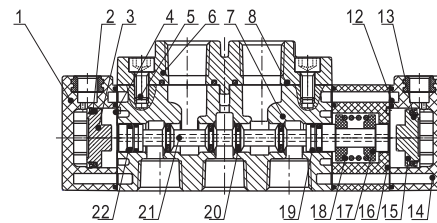
7A110



7A120

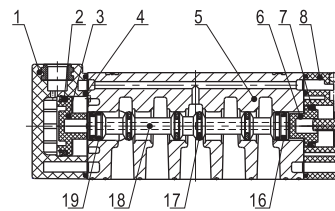


7A130C

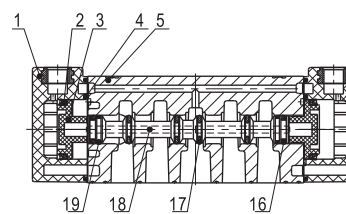


NO. Item	NO. Item	NO. Item	NO. Item	NO. Item
1 Pilot body	6 Port block	11 Bottom cover	16 Side cover	21 Spool
2 Piston O-ring	7 Body	12 Gasket	17 Spring holder	22 Spool gasket
3 Big piston	8 Screw	13 Piston O-ring	18 Spring	
4 O-ring	9 Small piston	14 Pilot body	19 Wear ring	
5 Screw	10 Gasket	15 Big piston	20 Spool O-ring	

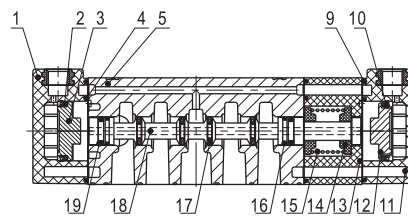
7MA110



7MA120



7MA130C



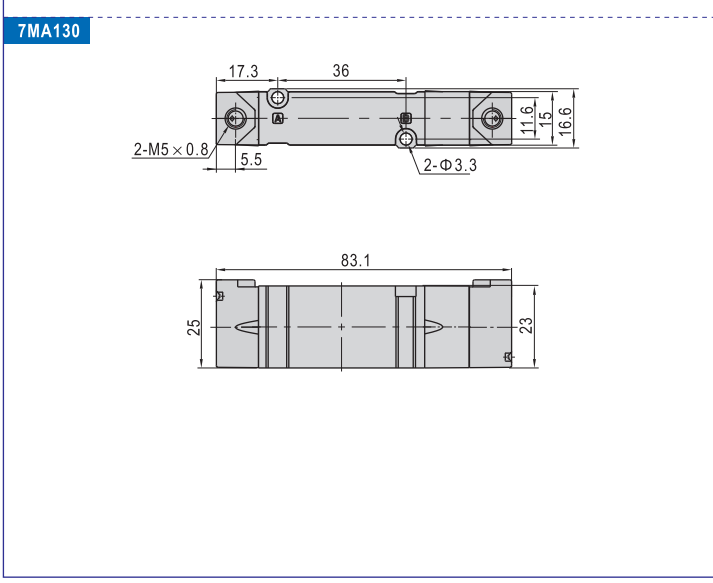
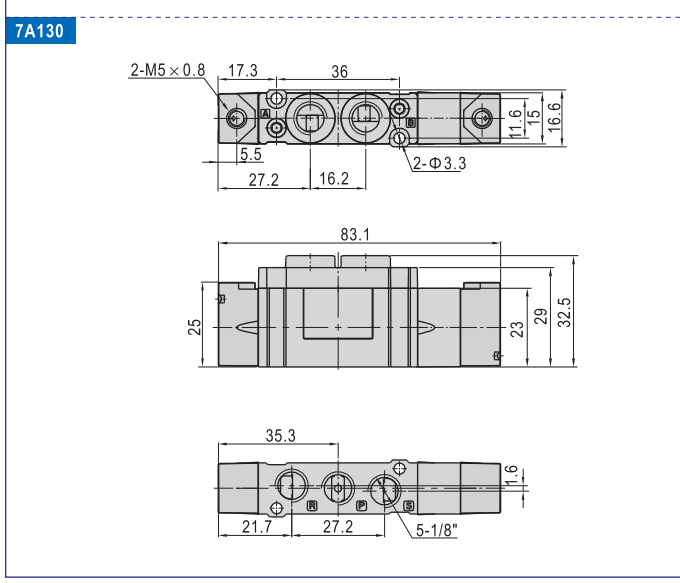
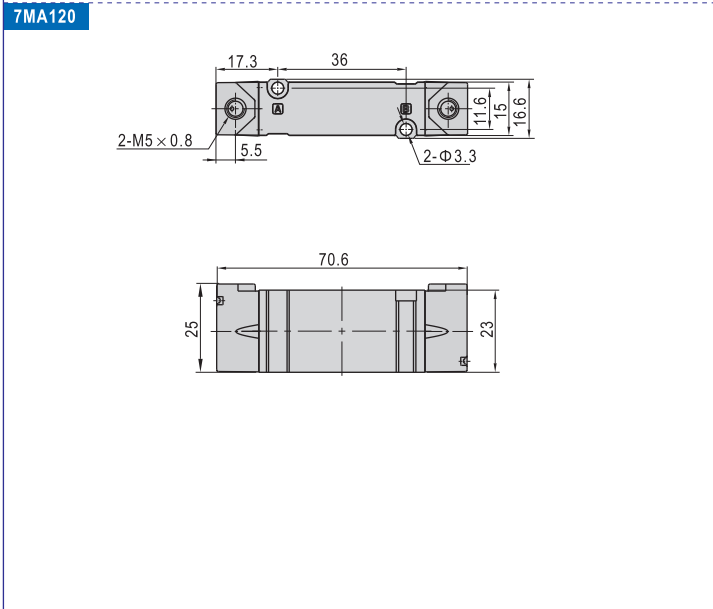
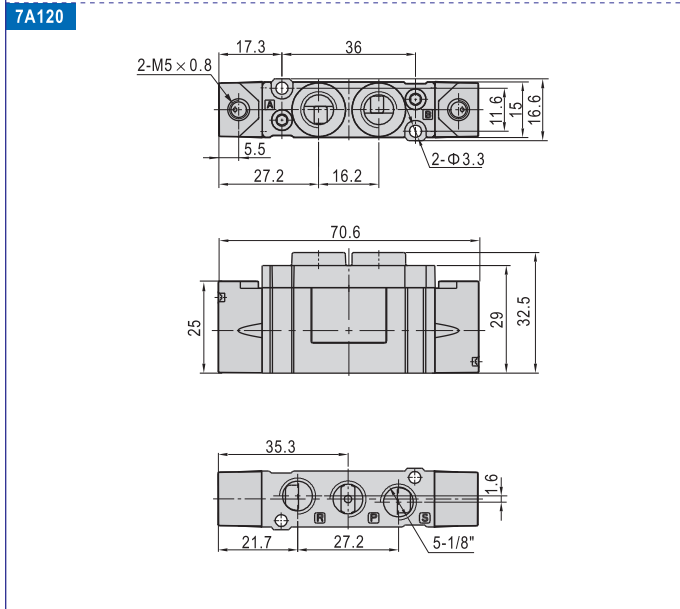
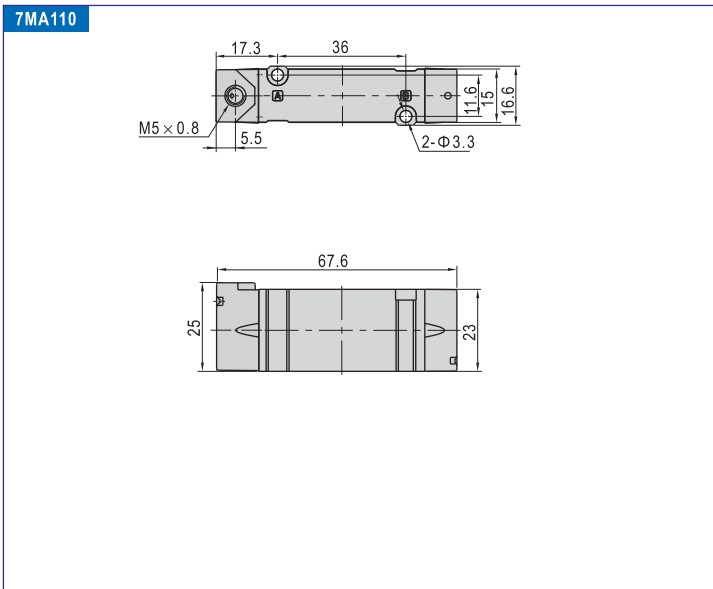
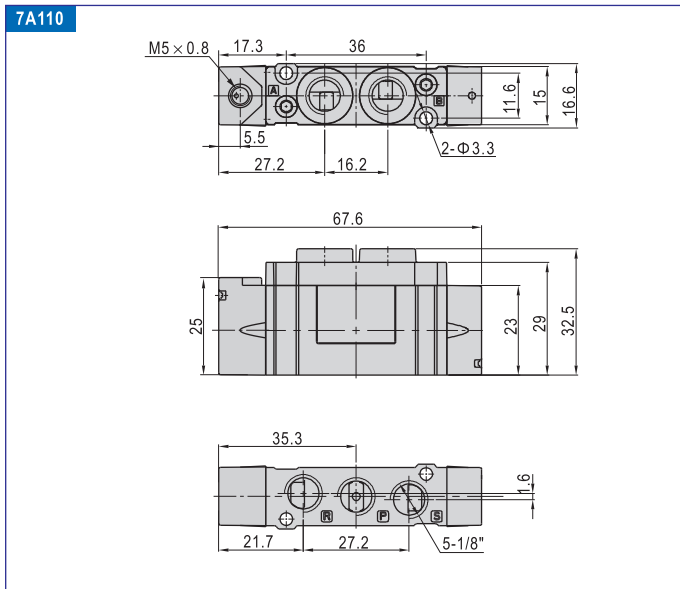
NO. Item	NO. Item	NO. Item	NO. Item	NO. Item
1 Pilot body	5 Body	9 Gasket	13 Side cover	17 Spool O-ring
2 Piston O-ring	6 Small piston	10 Piston O-ring	14 Spring holder	18 Spool
3 Big piston	7 Gasket	11 Pilot body	15 Spring	19 Spool gasket
4 O-ring	8 Bottom cover	12 Big piston	16 Wear ring	

Air valve(5/2 way \ 5/3 way)



7A Series

Dimensions

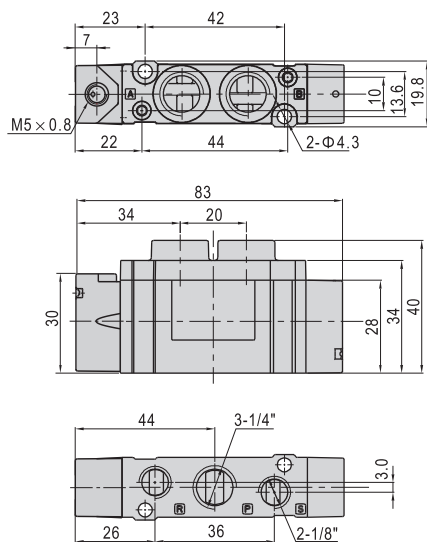


Air valve(5/2 way \ 5/3 way)

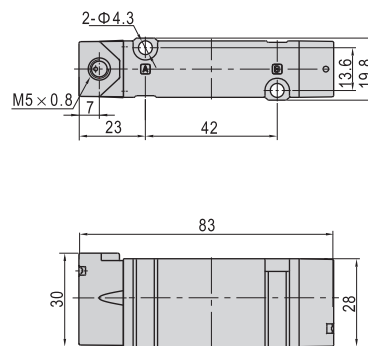


7A Series

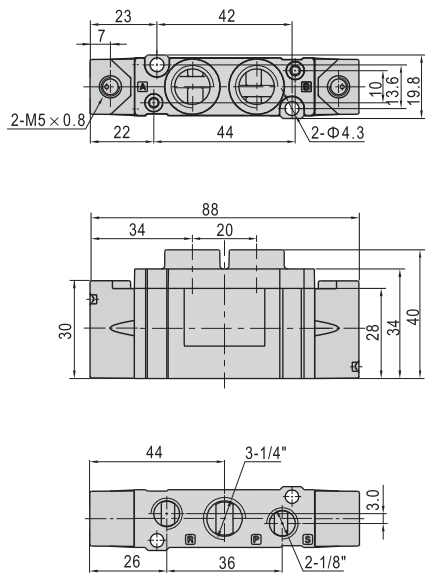
7A210



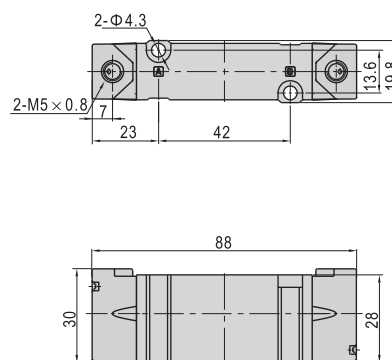
7MA210



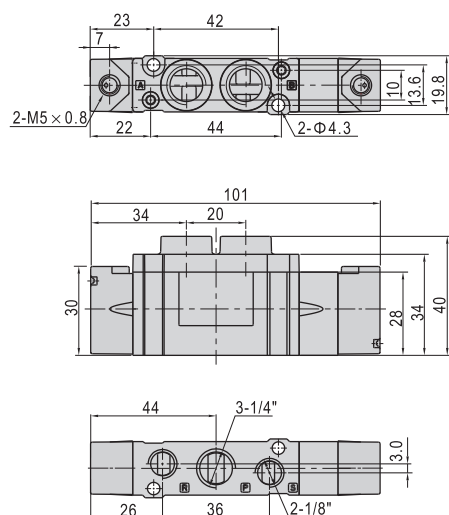
7A220



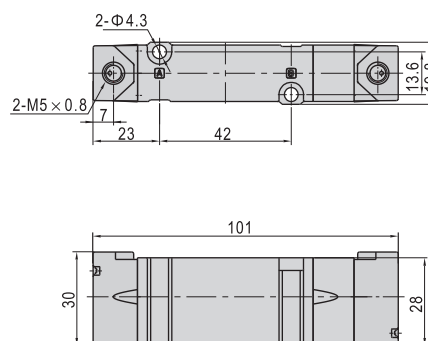
7MA220



7A230



7MA230



7A

Air valve(Accessories)



Manifold for 7A Series



Manifold

Product feature

1. It is available to integrate the direction control valves of the same series to form value group to save space and cost.
2. It is easy to examine when there are faults owing to the unified air intake and exhaust and unified wiring.
3. Flexible combination and strong expansion capability can make any combination or expansion of the numbers of direction control valves that are connected.
4. The manifold's plugged ports can make it easy and fast to joint tube.

Ordering code for blank plate

P-7V100M R2

P-7MV100M R2

Model	Code
7V100M: 7V100 Series manifold	R2: Blank plate for manifold
7V200M: 7V200 Series manifold	
7MV100M: 7MV100 Series manifold	
7MV200M: 7MV200 Series manifold	

Note:

1. Blank plate assembly of 7V series contains blank plate, screw.
2. Blank plate assembly of 7MV series contains blank plate, gasket, screw.

Specification

Item\Manifold model	7V100M	7V200M	7MV100M	7MV200M
Fluid	Air(to be filtered by 40 μ m filter element)			
Temperature °C	-20~70			
Adaptable valve's series	7A100 Series	7A200 Series	7MA100 Series	7MA200 Series

Ordering code for manifold

7V100M 5F P

7MV100M 5F P6 P

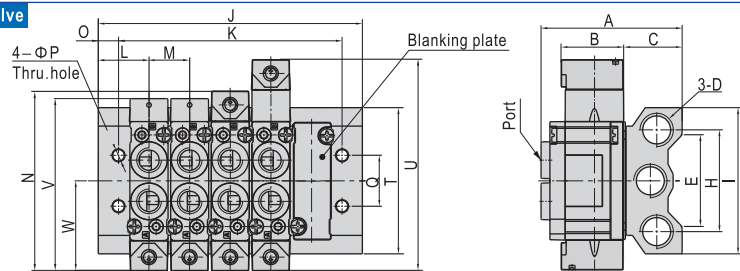
Model	Thread type	Number of stations	OD of work port
7V100M: 7V100 Series manifold	P: PT	1F: 1 Station	7V100M\7V200M No this code
7V200M: 7V200 Series manifold	T: NPT	2F: 2 Stations	7MV100M P6: Φ6mm
7MV100M: 7MV100 Series manifold	G: G	7MV100M P8: Φ8mm
7MV200M: 7MV200 Series manifold		16F: 16 Stations	7MV200M P8: Φ8mm
			7MV200M P10: Φ10mm

Note:

Manifold assembly of 7V series contains manifold, gasket, screw. Manifold assembly of 7MV series only contains manifold.

Dimensions

With 7A100\7A200 air valve

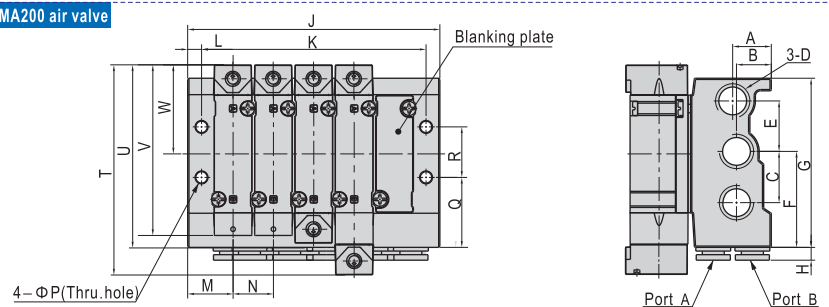


Model\Item	A	B	C	D	E	H	I	L	M	N	O	P	Q	T	U	V	W
7V100M	55.5	25	23	1/4"	36	40	57.5	20	16	70.6	8	4.5	20	57.5	83.1	67.6	35.3
7V200M	65	30	25	1/4"	38	42	60	22	19	88	8.5	4.5	21	60	101	83	44

Model\Item	J															
	1F	2F	3F	4F	5F	6F	7F	8F	9F	10F	11F	12F	13F	14F	15F	16F
7V100M	40	56	72	88	104	120	136	152	168	184	200	216	232	248	264	280
7V200M	44	63	82	101	120	139	158	177	196	215	234	253	272	291	310	329

Model\Item	K															
	1F	2F	3F	4F	5F	6F	7F	8F	9F	10F	11F	12F	13F	14F	15F	16F
7V100M	24	40	56	72	88	104	120	136	152	168	184	200	216	232	248	264
7V200M	27	46	65	84	103	122	141	160	179	198	217	236	255	274	293	312

With 7MA100\7MA200 air valve



Model\Item	A	B	C	D	E	F	G	H	L	M	N	P	Q	R	T	U	V	W
7MV100M	15.3	13.8	20	1/4"	20	38	67	5.1	5.5	18.5	16	4.5	28	20	83.1	70.6	67.6	35.3
7MV200M	19.2	19.2	21	1/4"	21	42	73	5.1	6	21	19	4.5	31.5	21	101	88	83	44

Model\Item	J															
	1F	2F	3F	4F	5F	6F	7F	8F	9F	10F	11F	12F	13F	14F	15F	16F
7MV100M	36.5	52.5	68.5	84.5	100.5	116.5	132.5	148.5	164.5	180.5	196.5	212.5	228.5	244.5	260.5	276.5
7MV200M	42	61	80	99	118	137	156	175	194	213	232	251	270	289	308	327

Model\Item	K															
	1F	2F	3F	4F	5F	6F	7F	8F	9F	10F	11F	12F	13F	14F	15F	16F
7MV100M	26	42	58	74	90	106	122	138	154	170	186	202	218	234	250	266
7MV200M	30	49	68	87	106	125	144	163	182	201	220	239	258	277	296	315

